

SOUTH MEADOW ESTATES

FINAL PLAT
OF

SOUTH MEADOW ESTATES
PART OF THE NORTHWEST QUARTER (NW/4) OF TWENTY-FOUR (24), TOWNSHIP ELEVEN (11) NORTH,
RANGE SEVEN (7) WEST OF THE MEAN MERIDIAN,
AN ADDITION TO THE CITY OF DURHAM CITY, DURHAM COUNTY, OKLAHOMA

LOT LINE TABLE

LINE NO.	DIRECTION	LENGTH	CHORD DISTANCE
L17	N44°59'54"W	35.36'	
L18	N07°28'0"E	68.40'	
L19	N40°45'53"E	78.60'	
L20	S48°15'51"W	76.39'	
L21	S40°02'26"W	55.00'	
L22	S45°00'14"E	37.14'	
L23	S47°29'48"W	66.88'	
L24	S34°29'48"W	66.88'	
L25	S38°16'59"E	35.36'	
L26	S53°53'04"W	35.36'	
L27	S44°59'34"E	35.36'	

LOT CURVE TABLE

CURVE NO.	LENGTH	RADIUS	DELTA	BEARING	CHORD DISTANCE
C16	170.66'	182.00'	53°13'35"	N17°33'46"E	164.48'
C17	110.48'	108.19'	61°59'33"	S17°26'45"W	110.08'
C18	57.68'	70.00'	47°11'47"	S72°32'32"W	56.04'
C19	63.27'	70.00'	51°17'12"	S25°34'02"W	61.14'
C20	23.13'	35.00'	37°51'46"	N82°56'21"E	22.71'
C21	21.97'	35.00'	35°38'20"	S89°23'48"W	21.62'
C22	41.77'	35.00'	88°22'54"	N42°00'39"W	39.34'
C23	41.77'	35.00'	88°22'54"	N46°56'24"W	39.34'

BASED ON SURVEYS OF THE
NW/4 S 88°59'34"E

50' MERT ENERGY R/W
BK. 379, PG. 1040

50' MERT ENERGY R/W
BK. 379, PG. 1040

50' MERT ENERGY R/W
BK. 379, PG. 1040

50' MERT ENERGY R/W
BK. 379, PG. 1040

50' MERT ENERGY R/W
BK. 379, PG. 1040

50' MERT ENERGY R/W
BK. 379, PG. 1040

50' MERT ENERGY R/W
BK. 379, PG. 1040

50' MERT ENERGY R/W
BK. 379, PG. 1040

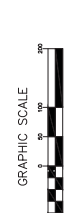
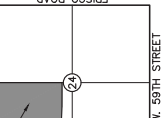
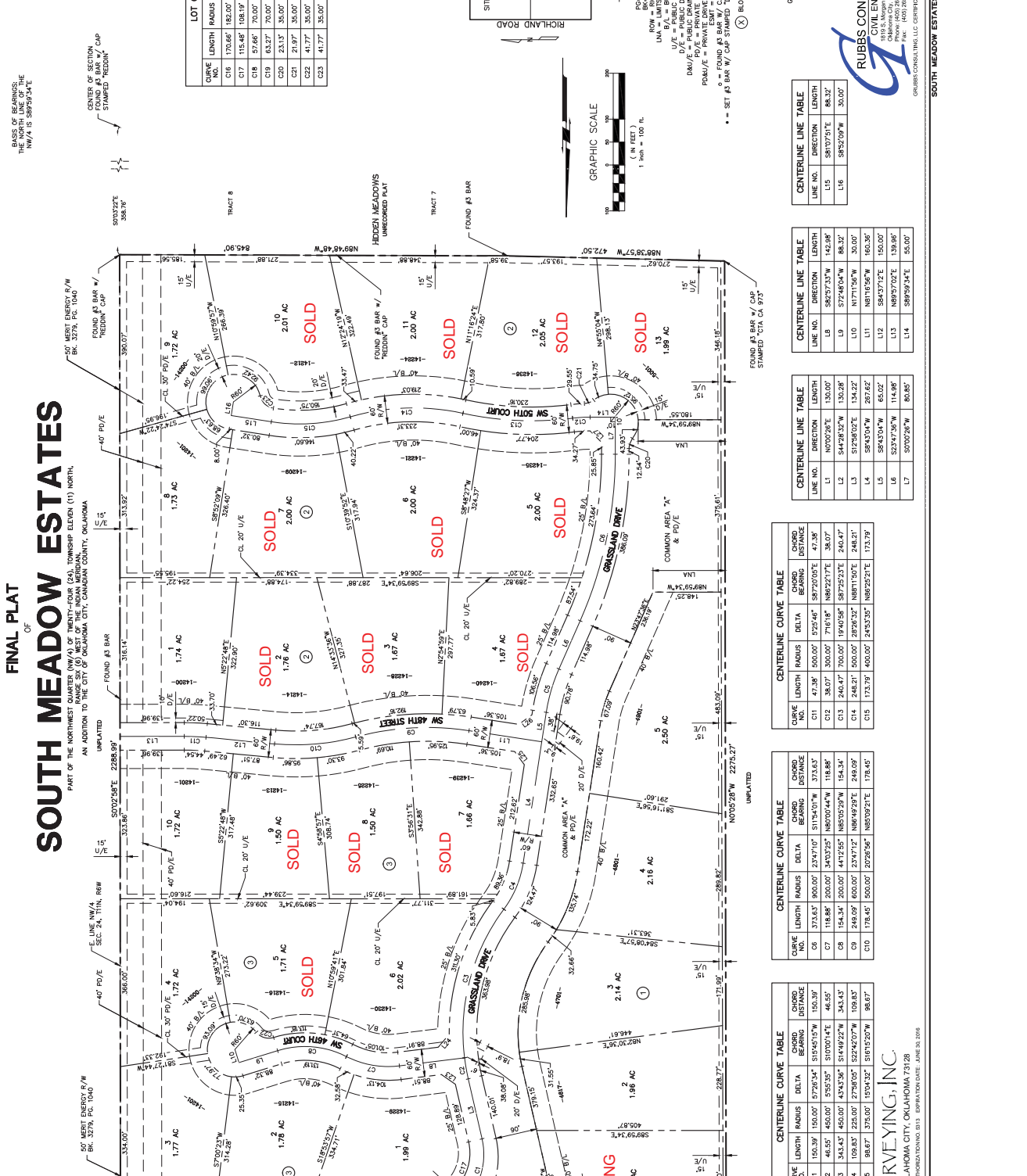
50' MERT ENERGY R/W
BK. 379, PG. 1040

50' MERT ENERGY R/W
BK. 379, PG. 1040

50' MERT ENERGY R/W
BK. 379, PG. 1040

50' MERT ENERGY R/W
BK. 379, PG. 1040

50' MERT ENERGY R/W
BK. 379, PG. 1040



CENTERLINE CURVE TABLE

CURVE NO.	LENGTH	RADIUS	DELTA	BEARING	CHORD DISTANCE
C1	150.39'	150.00'	37°26'54"	S15°45'15"W	150.39'
C2	46.55'	450.00'	5°52'35"	S10°00'14"E	46.55'
C3	343.43'	450.00'	43°32'36"	S14°49'22"W	343.43'
C4	109.87'	225.00'	27°38'02"	S22°42'02"W	109.87'
C5	98.87'	375.00'	15°58'32"	S16°15'20"W	98.87'

CENTERLINE CURVE TABLE

CURVE NO.	LENGTH	RADIUS	DELTA	BEARING	CHORD DISTANCE
C11	47.38'	500.00'	2°25'46"	S87°20'21"E	47.38'
C12	38.07'	500.00'	7°16'18"	S87°22'17"E	38.07'
C13	240.47'	700.00'	19°40'58"	S87°22'32"E	240.47'
C14	248.21'	500.00'	28°26'32"	N88°11'50"E	248.21'
C15	173.73'	400.00'	24°52'53"	N88°25'21"E	173.73'

CENTERLINE CURVE TABLE

CURVE NO.	LENGTH	RADIUS	DELTA	BEARING	CHORD DISTANCE
C16	57.68'	70.00'	47°11'47"	S72°32'32"W	56.04'
C17	63.27'	70.00'	51°17'12"	S25°34'02"W	61.14'
C18	23.13'	35.00'	37°51'46"	N82°56'21"E	22.71'
C19	21.97'	35.00'	35°38'20"	S89°23'48"W	21.62'
C20	41.77'	35.00'	88°22'54"	N42°00'39"W	39.34'
C21	41.77'	35.00'	88°22'54"	N46°56'24"W	39.34'

CENTERLINE CURVE TABLE

CURVE NO.	LENGTH	RADIUS	DELTA	BEARING	CHORD DISTANCE
C22	178.45'	500.00'	20°28'56"	N88°09'21"E	178.45'
C23	150.39'	150.00'	37°26'54"	S15°45'15"W	150.39'
C24	46.55'	450.00'	5°52'35"	S10°00'14"E	46.55'
C25	343.43'	450.00'	43°32'36"	S14°49'22"W	343.43'
C26	109.87'	225.00'	27°38'02"	S22°42'02"W	109.87'
C27	98.87'	375.00'	15°58'32"	S16°15'20"W	98.87'

CENTERLINE CURVE TABLE

CURVE NO.	LENGTH	RADIUS	DELTA	BEARING	CHORD DISTANCE
C28	373.63'	800.00'	23°47'10"	S15°40'57"W	373.63'
C29	118.88'	200.00'	34°03'23"	N89°05'44"W	118.88'
C30	154.34'	200.00'	44°17'25"	N85°05'29"W	154.34'
C31	240.09'	600.00'	23°47'12"	N88°49'29"E	240.09'
C32	178.45'	500.00'	20°28'56"	N88°09'21"E	178.45'

CENTERLINE CURVE TABLE

CURVE NO.	LENGTH	RADIUS	DELTA	BEARING	CHORD DISTANCE
C33	170.66'	182.00'	53°13'35"	N17°33'46"E	164.48'
C34	110.48'	108.19'	61°59'33"	S17°26'45"W	110.08'
C35	57.68'	70.00'	47°11'47"	S72°32'32"W	56.04'
C36	63.27'	70.00'	51°17'12"	S25°34'02"W	61.14'
C37	23.13'	35.00'	37°51'46"	N82°56'21"E	22.71'
C38	21.97'	35.00'	35°38'20"	S89°23'48"W	21.62'
C39	41.77'	35.00'	88°22'54"	N42°00'39"W	39.34'
C40	41.77'	35.00'	88°22'54"	N46°56'24"W	39.34'

CENTERLINE CURVE TABLE

CURVE NO.	LENGTH	RADIUS	DELTA	BEARING	CHORD DISTANCE
C41	57.68'	70.00'	47°11'47"	S72°32'32"W	56.04'
C42	63.27'	70.00'	51°17'12"	S25°34'02"W	61.14'
C43	23.13'	35.00'	37°51'46"	N82°56'21"E	22.71'
C44	21.97'	35.00'	35°38'20"	S89°23'48"W	21.62'
C45	41.77'	35.00'	88°22'54"	N42°00'39"W	39.34'
C46	41.77'	35.00'	88°22'54"	N46°56'24"W	39.34'

CENTERLINE CURVE TABLE

CURVE NO.	LENGTH	RADIUS	DELTA	BEARING	CHORD DISTANCE
C47	170.66'	182.00'	53°13'35"	N17°33'46"E	164.48'
C48	110.48'	108.19'	61°59'33"	S17°26'45"W	110.08'
C49	57.68'	70.00'	47°11'47"	S72°32'32"W	56.04'
C50	63.27'	70.00'	51°17'12"	S25°34'02"W	61.14'
C51	23.13'	35.00'	37°51'46"	N82°56'21"E	22.71'
C52	21.97'	35.00'	35°38'20"	S89°23'48"W	21.62'
C53	41.77'	35.00'	88°22'54"	N42°00'39"W	39.34'
C54	41.77'	35.00'	88°22'54"	N46°56'24"W	39.34'

CENTERLINE CURVE TABLE

CURVE NO.	LENGTH	RADIUS	DELTA	BEARING	CHORD DISTANCE
C55	170.66'	182.00'	53°13'35"	N17°33'46"E	164.48'
C56	110.48'	108.19'	61°59'33"	S17°26'45"W	110.08'
C57	57.68'	70.00'	47°11'47"	S72°32'32"W	56.04'
C58	63.27'	70.00'	51°17'12"	S25°34'02"W	61.14'
C59	23.13'	35.00'	37°51'46"	N82°56'21"E	22.71'
C60	21.97'	35.00'	35°38'20"	S89°23'48"W	21.62'
C61	41.77'	35.00'	88°22'54"	N42°00'39"W	39.34'
C62	41.77'	35.00'	88°22'54"	N46°56'24"W	39.34'

DURHAM SURVEYING, INC.
1819 SOUTH MORGAN ROAD, OKLAHOMA CITY, OKLAHOMA 73128
(405) 263-8444 FAX (405) 263-8486
CERTIFICATE OF AUTHORIZATION NO. B13 SUPERVISOR DATE: JUNE 30, 2016

RUBBS CONSULTING, LLC
1915 S. Meridian Blvd.
Oklahoma City, Oklahoma 73102
(405) 524-3828
FAX: (405) 265-5849

SUBVISION CONTAINS:
TWENTY-EIGHT (28)
THREE (3) BLOCKS
GRASSLAND AREA: 132,000.00 SQ. FT.
OR 66.00 ACRES

*** SET #3 BAR W/ CAP UNLESS OTHERWISE NOTED ***

UNADJUSTED
UNADJUSTED
UNADJUSTED

FOUND #3 BAR W/ CAP
STAMPED 'DAMU' CAP

FOUND #3 BAR W/ CAP
STAMPED 'REDIN' CAP

FOUND #3 BAR W/ CAP
STAMPED 'REDIN' CAP